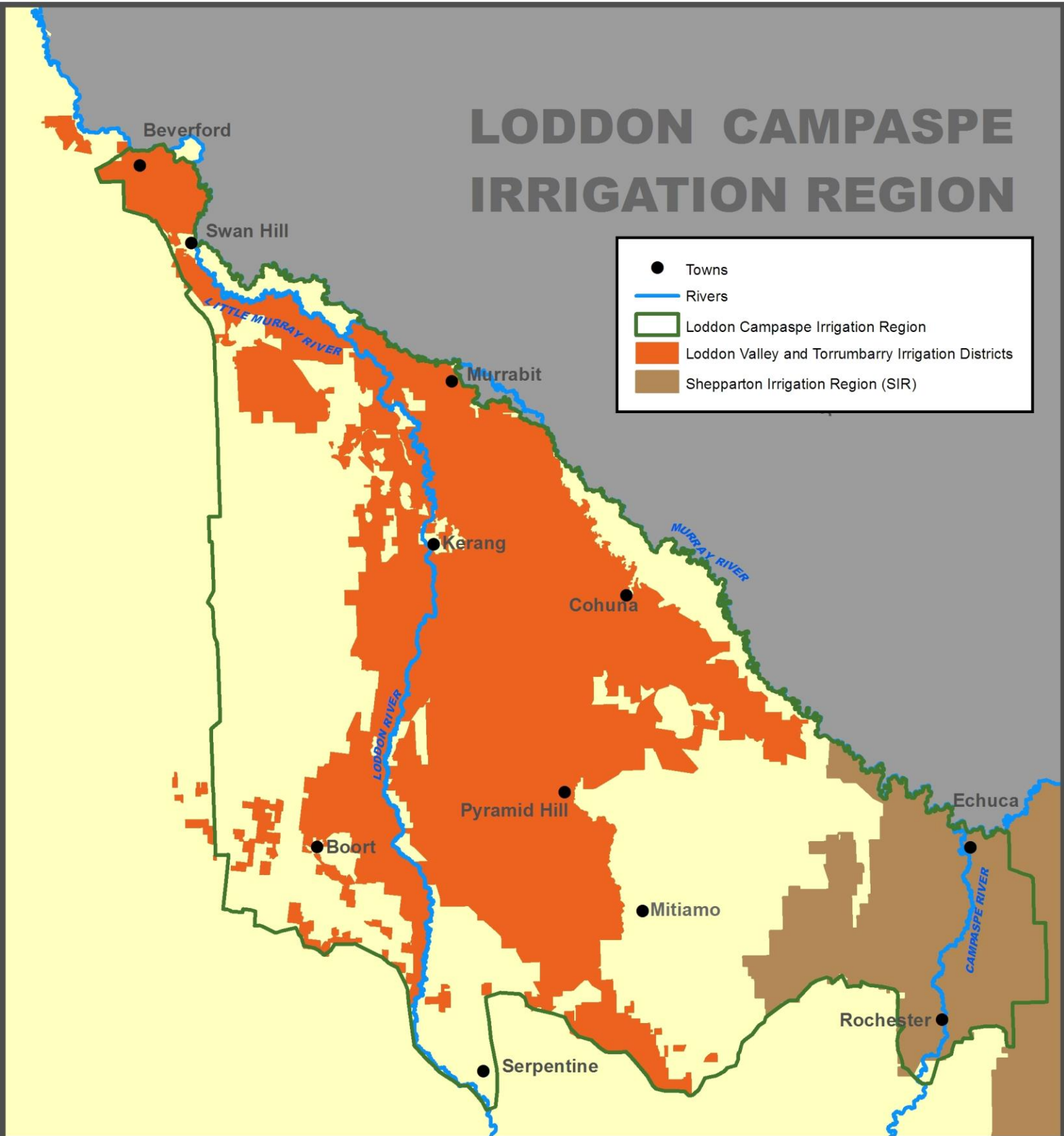


LODDON CAMPASPE IRRIGATION REGION



Cost Share Incentives

Loddon Campaspe Irrigation Region
February 2017

Natural Resource Management in Loddon Campaspe Irrigation Region

In the Loddon Campaspe Irrigation Region (LCIR) investment is delivered under the North Central Catchment Management Authority's Loddon Campaspe Irrigation Region Land and Water Management Plan. The plan area includes the towns of Swan Hill, Kerang, Boort, Pyramid Hill, Cohuna, Leitchville, Gunbower, Echuca, Rochester, Koondrook and Lockington.

Key issues included in the plan are the ongoing problems of salinity, increasing agricultural productivity, protecting the environment and increasing social wellbeing. But the plan also identifies options to manage changes resulting from rapid water market reform. Cost-share incentives are one of the tools used to achieve its objectives.

To obtain further information on each incentive and the level of assistance you can receive, please contact an Agriculture Victoria Project Officer for your area, listed below.

- **Landowners must contact an Agriculture Victoria Project Officer to receive approval before commencing works.**
- **To be eligible for payment of cost-share incentives it is essential that the landowner follow the relevant guidelines for each scheme.**
- **Incentives outlined in this brochure are always subject to the availability of funds.**
- **For the Rochester/Campaspe area, the incentives available are explained in a separate brochure 'Incentives for Catchment Works in the Shepparton Irrigation Region including the Campaspe Irrigation District'.**

Improved Land Management - Soil Salinity Survey

Project Officer: Glenn Thompson

Incentive available for: Enabling landholders to identify salinity on their properties in order to make informed management decisions.

NOTE: In some designated areas for broadacre properties, these surveys are a prerequisite for completing a Whole Farm Plan. To determine if this is a requirement for your property please contact the Project Officer for your area.

Level of assistance: Agriculture Victoria staff will coordinate the survey when there is sufficient soil moisture. The landholder does not need to pay for the survey, but may need to contribute by supplying steel posts for a 240 metre x 240 metre grid on the farm and by providing labour to assist with the grid and the soil salinity survey if requested.

Whole Farm Plans

Project Officers: Matthew Hawken, Kathy Long and Tim Robinson

Preparing a Whole Farm Plan ensures that money invested in property development is well spent, and that farm works do not interfere with regional drainage, environmental or cultural features or floodplain water flow.

A Whole Farm Plan can be of assistance in considering backbone connection options if you are part of a Goulburn Murray Water (GMW) Strategic Connection Program.

Incentive available for: Assistance towards the cost of a topographical survey and design for broadacre and irrigation farms.

Areas that require a soil salinity survey; or in modernisation areas

Level of assistance: 85% of the cost - up to a maximum rate of reimbursement

Topographical survey \$51.10 per hectare

Design \$58.75 per hectare

Areas that do not require a soil salinity survey; or outside the modernisation areas

Level of assistance: 50% of the cost - up to a maximum rate of reimbursement

Topographical survey – maximum rate \$30.00 per hectare

Design - maximum rate \$34.55 per hectare

Farm Water Program

Contact your Whole Farm Plan Project Officer

The Farm Water Program, with Australian and Victorian Government assistance, aims to achieve water savings through improved farm irrigation systems. The water savings are shared between farmers and the environment, with at least half the water savings transferred to the State or Commonwealth environment water holder.

The Farm Water Program enables irrigators to implement on-farm irrigation improvements to increase productivity, regional development and optimise the benefits of a modernised supply system.

- Agriculture Victoria is a consortium member, led by Goulburn Broken Catchment Management Authority (GBCMA), and has a role in working with irrigators to develop a water savings plan and complete the required application processes for Farm Water.
- Program rollout timing is governed by funding from either the Commonwealth or State Government.
- Calls for expressions of interest in the program are advertised in local media.
- One of the key eligibility criteria is to ensure you have an up-to-date Whole Farm Plan.
- Eligible farms must be connected to the modernised irrigation system.

For further information visit www.gbcma.vic.gov.au and follow the links to the Farm Water Program.

Further Advice - Planting Native Vegetation

Project Officers: Jenny Spence, Glenn Thompson, Matthew Hawken

Planting, protecting and restoring native vegetation has multiple farm benefits, including:

- Providing shade, shelter and wind-breaks for stock, pastures and crops
- Reducing groundwater levels and assisting in salinity management
- Capturing and storing soil carbon
- Preventing and managing erosion
- Providing habitat for birds that help control insect pests on farms
- Assisting pollination services
- Enhancing economic value and aesthetics of a property

To increase your planting success and survival rates, contact Agriculture Victoria Project Officers up to 12 months prior to planting for planning advice and species selection.

Project Officer contact numbers

Agriculture Victoria - Echuca Office:

Kathy Long (03) 5482 0429

Agriculture Victoria - Kerang Office:

Matthew Hawken (03) 5450 9528
Tim Robinson (03) 5450 9561
Jenny Spence (03) 5450 9557
Glenn Thompson (03) 5450 9555

North Central Catchment Management Authority:

Enquiries (03) 5448 7124

Government Agencies Providing Natural Resource Management Cost-Share Incentives

Government agencies work in partnership to deliver and support the cost-share incentives described in this brochure. Staff share knowledge and information across the agencies and work together to achieve the most positive outcome and experience for the landholder.

North Central Catchment Management Authority (NCCMA)

The North Central CMA coordinates natural resource planning and management in the North Central region of Victoria. It implements the North Central Regional Catchment Strategy (RCS), which is an asset based approach to protecting and enhancing the region's key natural resource assets. North Central CMA is responsible for works on waterways, regional drainage and floodplain management.

The North Central CMA coordinates Australian and State Government investment in natural resource management. Investment in the Loddon Campaspe Irrigation Region is delivered under the Loddon Campaspe Irrigation Region Land and Water Management Plan. The North Central CMA's Natural Resources Management Committee provides strong community ownership and input to the RCS and its supporting plans and sub-strategies.

Goulburn Broken Catchment Management Authority (GBCMA)

The Goulburn Broken CMA coordinates natural resource planning and management for the Goulburn Broken catchment. It provides day-to-day land and water management services in the Shepparton Irrigation Region under the Shepparton Irrigation Region Catchment Strategy. It also services landholders in the Rochester/Campaspe area in the North Central CMA region.

Local Government

The Loddon Campaspe Irrigation Region includes the municipalities of Gannawarra, Campaspe, Loddon and the Rural City of Swan Hill. Local government is responsible for land use planning and development approvals and is involved in the approval process for some works undertaken using cost-share incentives.

Agriculture Victoria

The Agriculture Victoria 'Irrigation Team' provides case management, technical and extension support for implementing the cost-share incentives under the North Central RCS and the Loddon Campaspe Irrigation Region Land and Water Management Plan.

Goulburn Murray Water

Goulburn Murray Water (GMW) manages the supply of water to customers in its irrigation areas. GMW licenses surface and groundwater extractions and plays a major role in managing irrigation salinity, water quality and regional economic development. GMW also provides technical support to the delivery of several cost-share incentives including Community Surface Water Management Systems and Whole Farm Plans.

GMW is also responsible for the delivery of the Connections Program which is modernising the irrigation supply system.

Department of Environment, Land, Water and Planning

The Department of Environment, Land, Water and Planning sets guidelines for the regional planning activities of Catchment Management Authorities and oversees government investment.



If you would like to receive this information/publication in an accessible format (such as large print or audio) please call the Customer Service Centre on: 136 186, National Relay Service/TTY 133 677.

Published by the Department of Economic Development, Jobs, Transport and Resources, September 2016

© The State of Victoria, 2009

This publication is copyright. No part may be reproduced by any process except in accordance with the provisions of the *Copyright Act 1968*.

Authorised by the Victorian Government, 1 Spring Street, Melbourne 3000

ISBN 978 1 74199 773 6

Disclaimer: This publication may be of assistance to you but the State of Victoria and its employees do not guarantee that the publication is without flaw of any kind or is wholly appropriate for your particular purposes and therefore disclaims all liability for any error, loss or other consequence which may arise from you relying on any information in this publication.

For more information visit www.economicdevelopment.vic.gov.au or call the Customer Call Centre on 136 186.