



Agriculture Victoria Seasonal Updates Water Resource update

February 2020





Contents

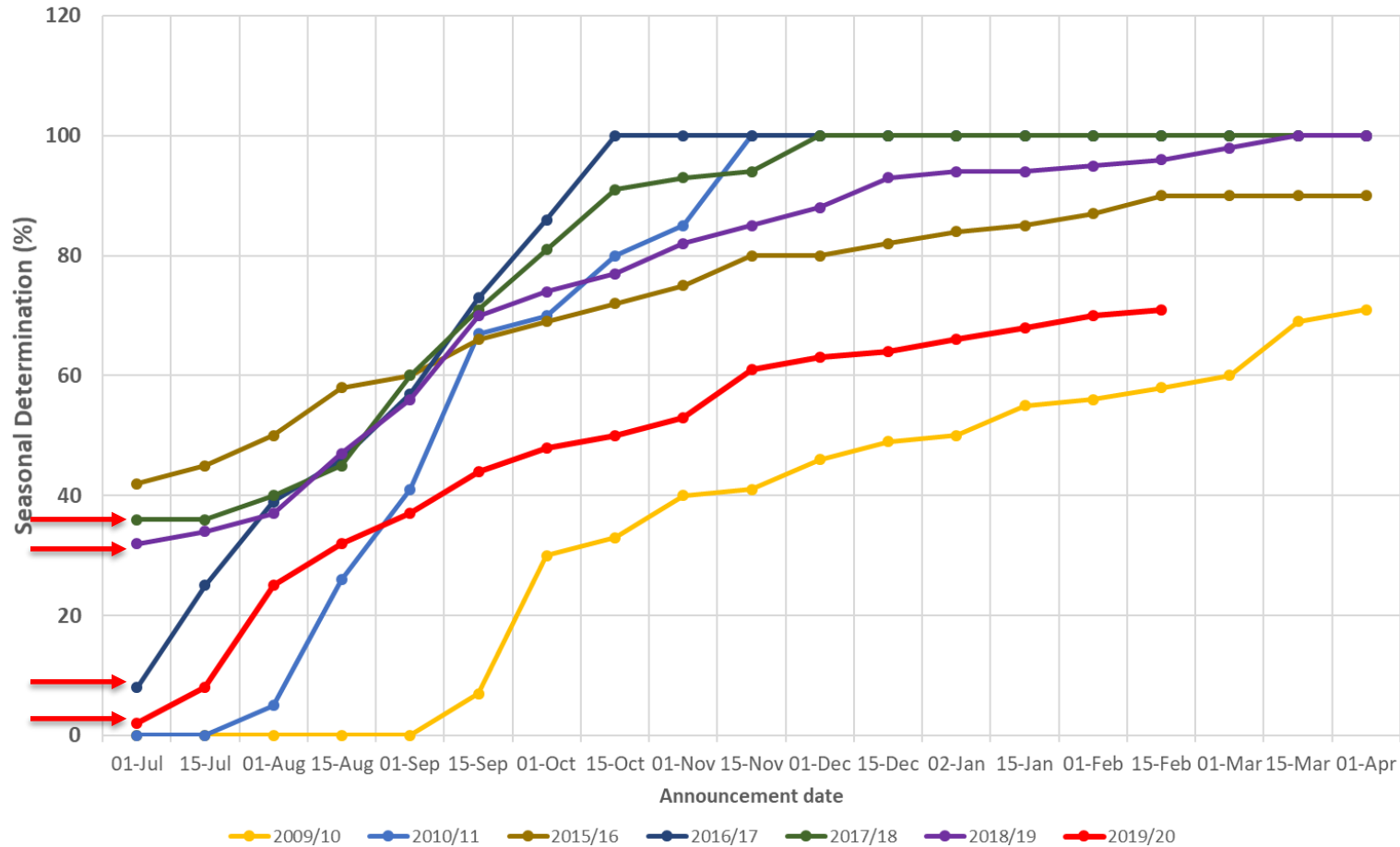
- **Current water availability**
- **Catchment conditions**
- **2020/21 outlook**
- **Water use and current water ownership**

Seasonal Determinations

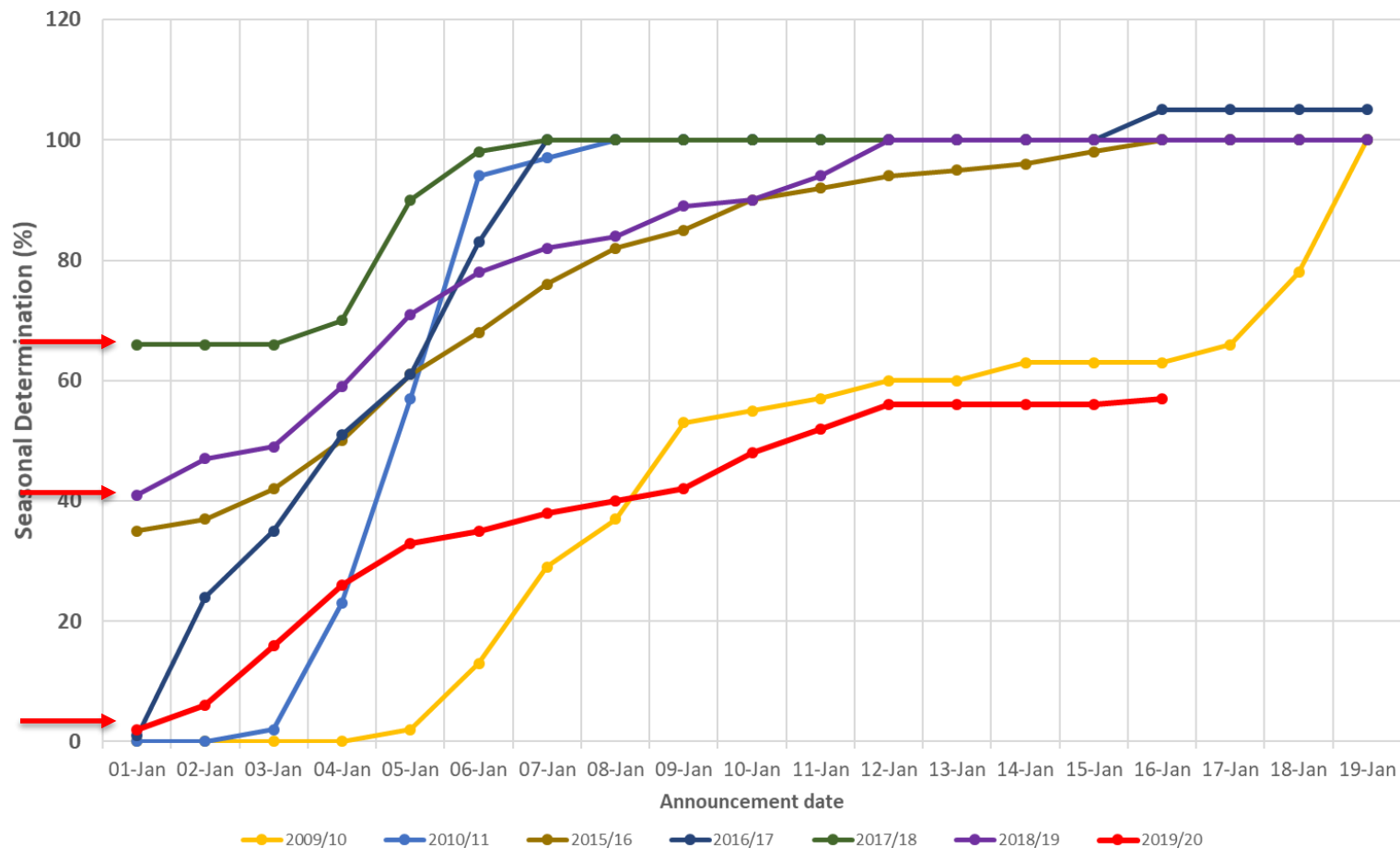
Regulated Surface Water

System	HRWS	LRWS	Low Spill Risk
Murray	57%	0%	Declared (Jul)
Broken	0%	0%	-
Goulburn	71%	0%	Declared (Jul)
Campaspe	71%	0%	Declared (Jul)
Loddon	71%	0%	-
Bullarook	100%	100%	-
NSW Murray	97% (HS)	0% (GS)	
<i>Effective 17 February 2020</i>			

Goulburn Seasonal Determination Announcements



Murray Seasonal Determination Announcements

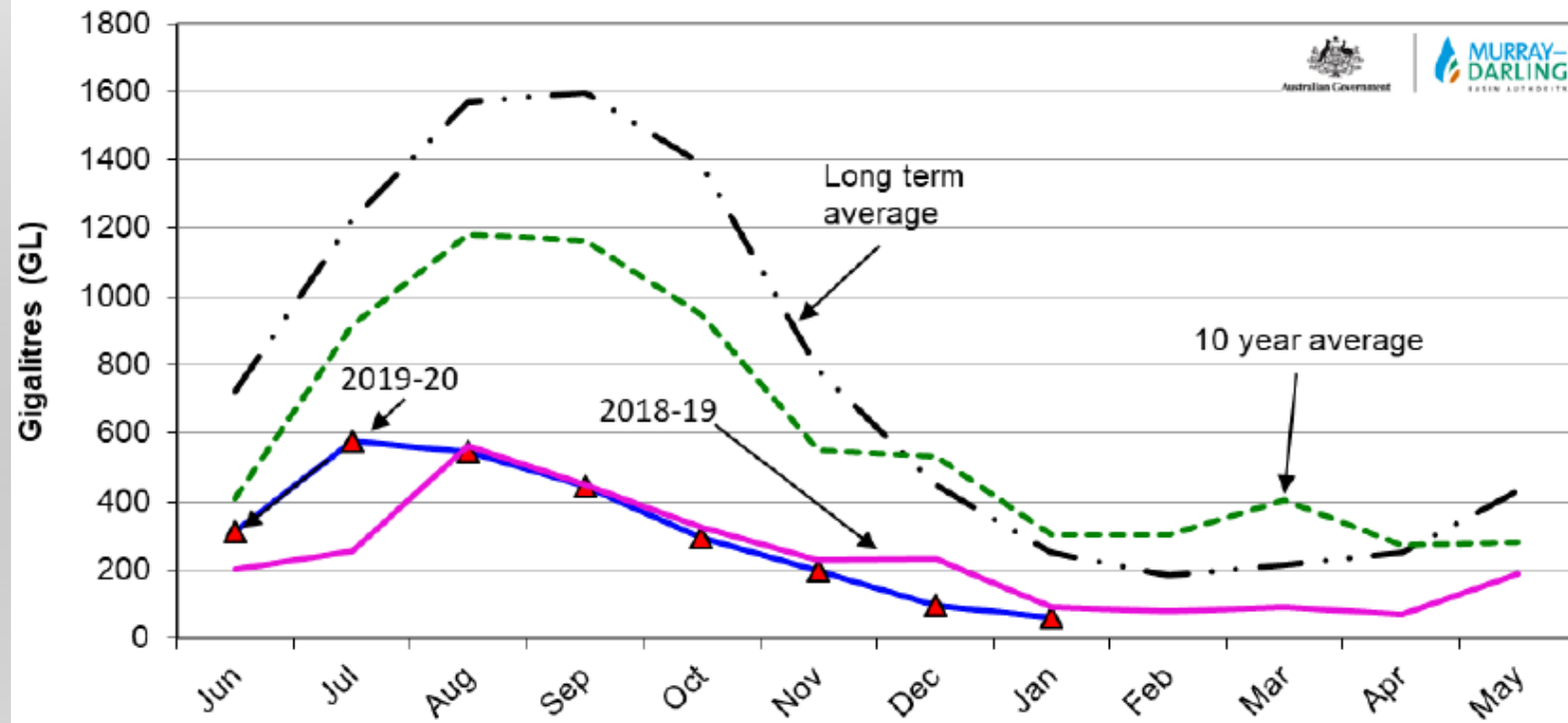


2019/20 System Inflows Jul-Jan

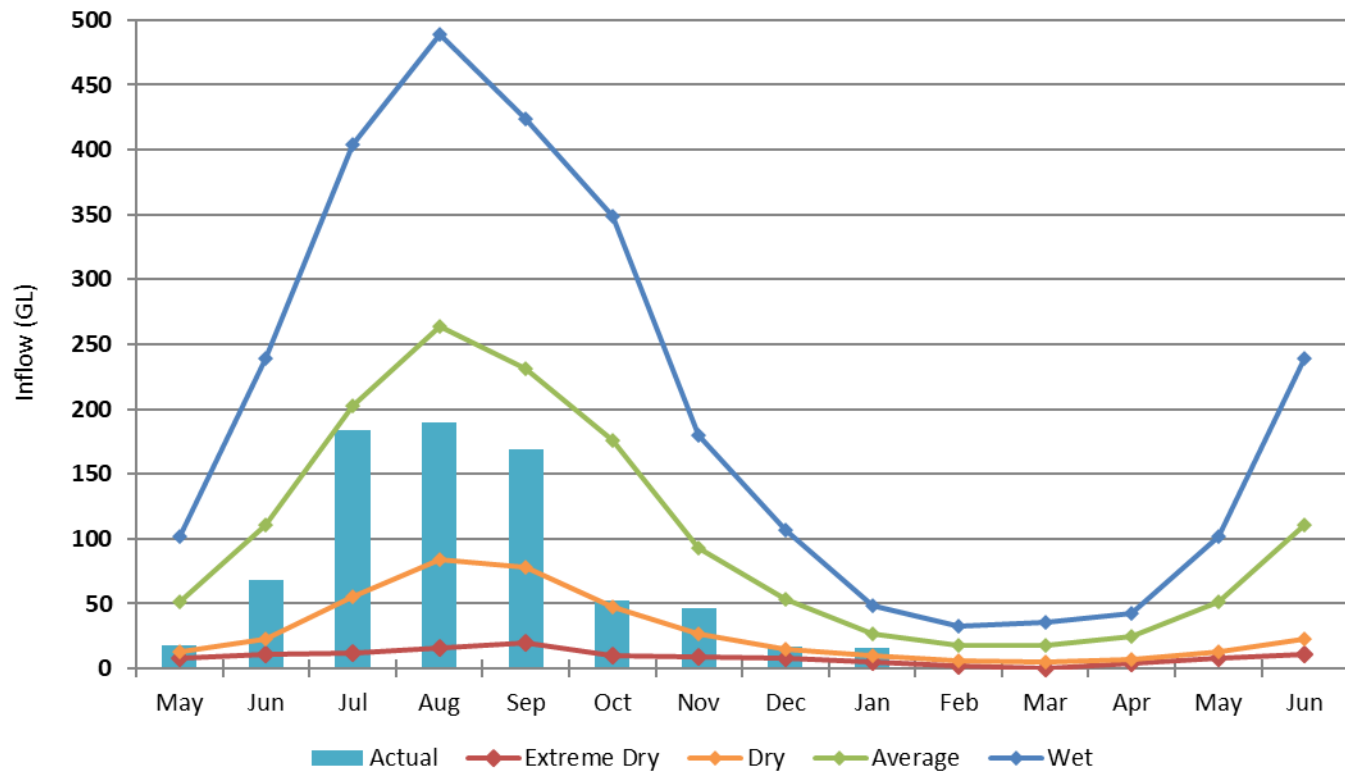


Storage	Inflow Volume (GL)	Percent of Average	Chance of Greater
Dartmouth	341.8	54%	83%
Hume	667.6	35%	90%
Buffalo	132.6	42%	82%
Eildon	674.8	65%	74%
Goulburn Weir	432.0	49%	81%
Eppalock	20.8	17%	84%
Cairn Curran	29.8	36%	71%

Murray System Monthly Inflows (excl. Snowy, Darling, inter-valley trade and environmental inflows)



Lake Eildon Inflows 2019-20



Outlook for 2020/21



- Released on 17 February 2020
- Early season reserves in Murray and Goulburn systems
- No additional reserves until after 1 April
- Similar position in the Goulburn to this time last year
- Lower reserves in the Murray system
- No reserves in the Campaspe and Broken
- Loddon system will follow the Goulburn system

2020/21 Murray outlook



Murray Outlook for 2020/21 Seasonal Determination of High-Reliability Water Shares

Inflow Conditions	1 July 2020	17 August 2020	15 October 2020	17 February 2021
Wet	31%	56%	100%	100%
Above Average	17%	41%	81%	100%
Average	9%	33%	62%	100%
Below Average	0%	24%	46%	87%
Dry	0%	11%	32%	45%
Very Dry	0%	9%	26%	39%
Extreme Dry	0%	0%	0%	9%

2020/21 Goulburn outlook

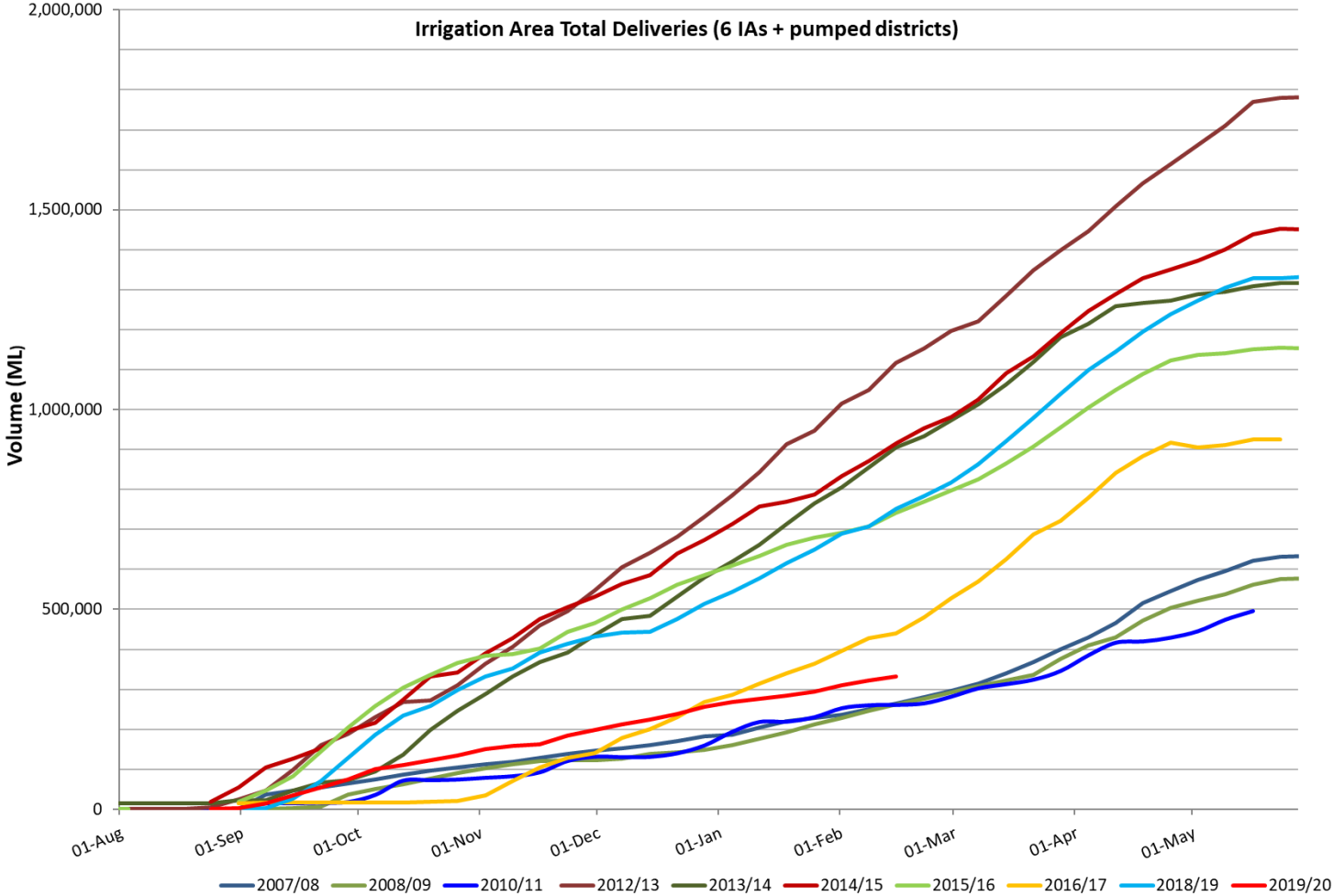


Goulburn and Loddon Outlook for 2020/21 Seasonal Determination of High-Reliability Water Shares

Inflow Conditions	1 July 2020	17 August 2020	15 October 2020	17 February 2021
Wet	41%	76%	100%	100%
Above Average	25%	50%	93%	100%
Average	14%	42%	72%	100%
Below Average	7%	33%	53%	79%
Dry	1%	17%	36%	45%
Very Dry	0%	11%	29%	36%
Extreme Dry	0%	3%	9%	14%



Irrigation Area Total Deliveries (6 IAs + pumped districts)



Murray System Current Water Ownership



	Owner Type		
	Private	Environment	Water Corporations
In / Credit			
Carryover	187 GL	350 GL	40 GL
New allocations	507 GL	270 GL	38 GL
Trade in	676 GL	250 GL	3 GL
Returned from spillable accounts	0 GL	0 GL	0 GL
Return flows*	0 GL	582 GL	0 GL
Out / Debit			
Transferred into spillable accounts	0 GL	0 GL	0 GL
Trade out*	499 GL	912 GL	13 GL
Used^	433 GL	340 GL	20 GL
Currently available in allocation accounts	439 GL	200 GL	48 GL
Volume remaining in spillable accounts	0 GL	0 GL	0 GL
Volume spilled from spillable accounts	0 GL	0 GL	0 GL

This shows all water available to use or trade in allocation accounts recorded in the Victorian Water Register. It does not include other water in the system like minimum flows.

*Return flows and trade is used as a mechanism to account for environmental water deliveries from the Murray, Goulburn and other tributaries to South Australia. Due to long travel times to South Australia there can be delays in the traded volumes corresponding to return flows and used volumes. Because of these delays the environmental trade and recredit volumes are displayed here are estimated figures.

^The volume of water used excludes water that has been used that has been sourced from other systems by tagged use.

Goulburn System Current Water Ownership



	Owner Type		
	Private	Environment	Water Corporations
In / Credit			
Carryover	173 GL	194 GL	52 GL
New allocations	514 GL	311 GL	62 GL
Trade in	262 GL	301 GL	15 GL
Returned from spillable accounts	0 GL	0 GL	0 GL
Return flows	0 GL	11 GL	0 GL
Out / Debit			
Transferred into spillable accounts	0 GL	0 GL	0 GL
Trade out	307 GL	307 GL	49 GL
Used*	290 GL	351 GL	14 GL
Currently available in allocation accounts	351 GL	159 GL	66 GL
Volume remaining in spillable accounts	0 GL	0 GL	0 GL
Volume spilled from spillable accounts	0 GL	0 GL	0 GL

This shows all water available to use or trade in allocation accounts recorded in the Victorian Water Register. It does not include other water in the system like minimum flows.

* The volume of water used includes water that has been used in other systems by tagged use.

Trade Review



Goulburn to Murray

- Vic Government announced a review of trade rule
- Damage to lower Goulburn River, current rules do not protect environment
- New operational rule needed
- Vic Government to release a consultation paper
- Public consultation expected in March 2020

Bushfire impacts



- Large areas of the Hume and Ovens (Buffalo) catchment burnt
- Potential impact on quality and quantity of runoff
- Runoff impacts depend on type of vegetation burnt, difficult to quantify
- Challenges for urban water treatment process

Wrapping Up



A tough 2019/20, uncertain 2020/21

- Only fourth time Murray seasonal determination less than 100% HRWS
- Seventh time for the Goulburn since 2002/03
- GMID deliveries low this season
- 2020/21 seasonal determination outlooks available

Questions



Contact us



1800 013 357



www.gmwater.com.au



40 Casey Street, Tatura

GOULBURN-MURRAY
WATER

